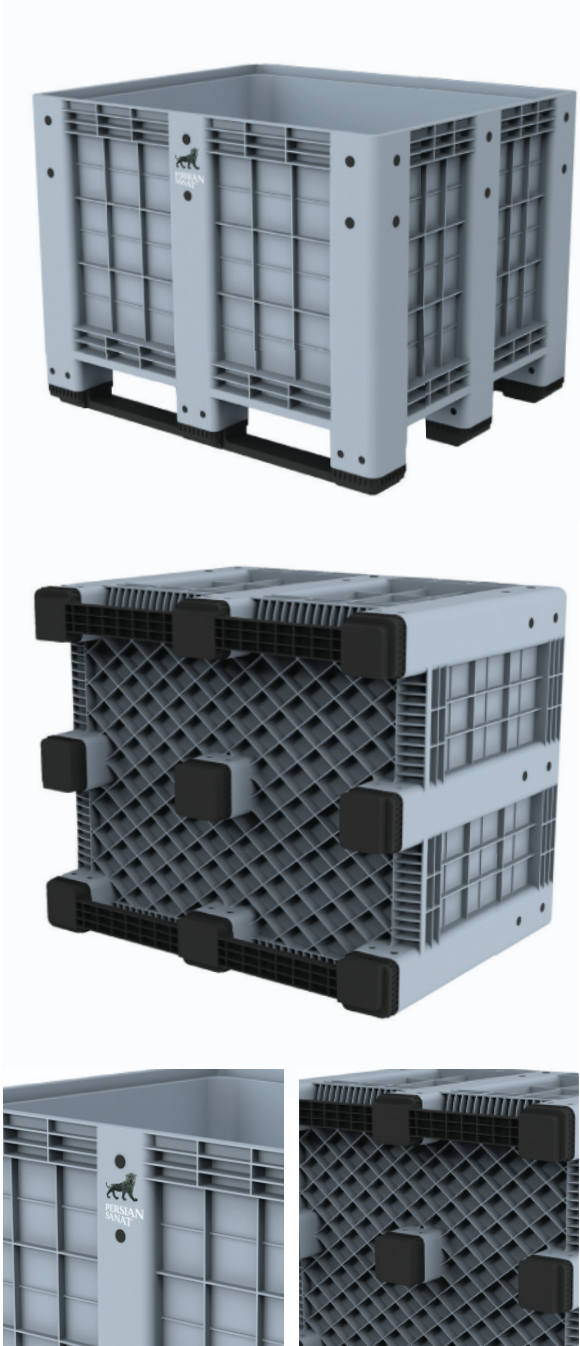


PERSIAN SANAT

BP1-2R

You do not always have to carry fully packaged products. High volume pallet boxes are known as an ideal solution for safe storage and convenient transportation of products such as vegetables, fresh and dried fruits, nuts and small parts or bulk goods. They are primarily used in the food industry, agriculture or industrial production. Another advantage is that they adapt very well to automatic transmission systems. The material used to manufacture this type of pallet is food-grade.



Logo print or embossment

Equipped by runners to be capable of racking systems



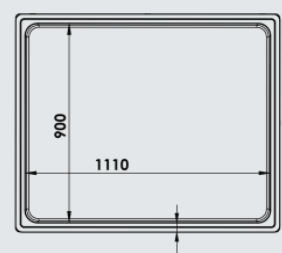
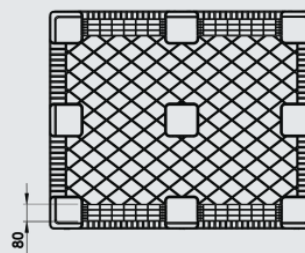
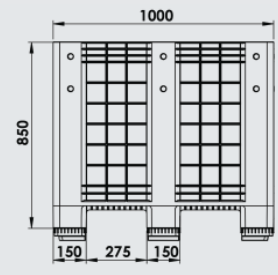
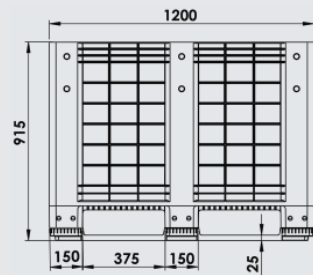
PERSIAN SANAT

Art No.
PS-1210-BP-2R
Previous Name
BIP1210/S2R

Net weight (kg)	45.5 ± 0.5
Bottom type	2 Runners (Snap-On)
External dimension (mm)	1200×1000×915
Internal dimension (mm)	1110*900*700
Capacity (L)	700
Temperature stability (°c)	-20 To +40
Stacking load (kg)	5000
Static load (kg)	5000
Dynamic load (kg)	1000
Racking load (kg)	1000
Loading quantities (pcs/approx.)	84 104
Type	Bottom and wall close
Safety rims (mm)	-
Material	HDPE
Color	Other colors on request
Logo option	Print & Embossment

the load capacities are based on an evenly distributed loads and it can vary according to the type of load.

Container 40 HC
 Jumbo Truck



All dimensions may vary ± 5mm due to production process and raw materials characteristics.



POWER OF QUALITY