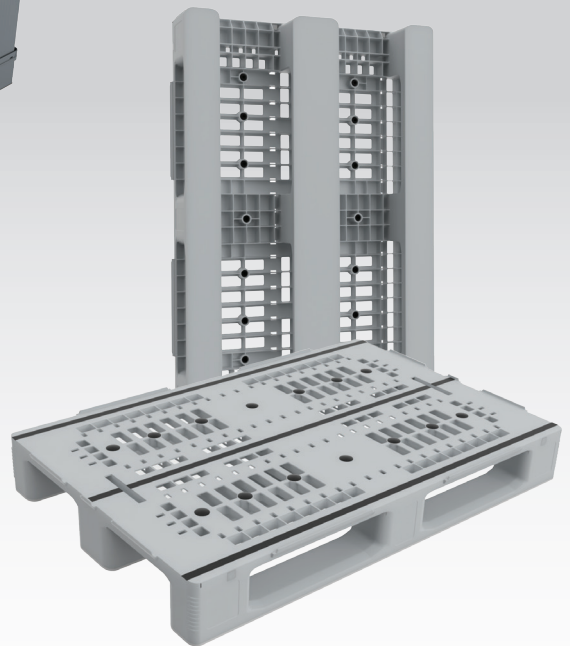
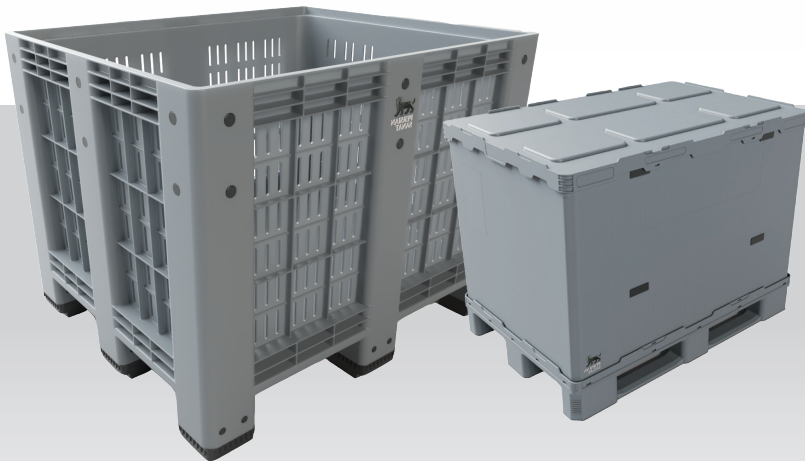


POWER OF QUALITY



About us

The founders of Persian Sanat have fifty years of production experience in the plastic industry. Seyyed Javad Mirheidari, Persian Sanat chairman of the board , founded his first workshop in 1973 and he has contributed to the development of this industry with his trade union activities, helping establish the National Association of Plastic and Polymer Industries of Iran, the Association of Hamgen Plastic Industries of Tehran and setting up other factories. Considering the importance of moving and warehousing goods in the supply chain and the need for this in various industries, Persian Sanat started its activity in 2008 to solve part of this need by focusing on the production of pallets and pallet boxes .

Persian Sanat products are part of the supply chain infrastructure of its customers. Persian Sanat has realized the importance of these products, that's why it has always kept its production line up to date. It has attracted a team of more than 100 people from the fields of polymer, industry, chemistry, management, production and commerce and has set up a modern laboratory to control the quality of its products. It is with the support of this team that Persian Sanat products are used in European countries such as France, Germany, Belgium, Italy, Spain, Poland, UK , Ireland, Russia and Asian countries such as UAE, India, China.

The first logo of Persian Sanat was designed in 2008, but the logo and visual identity structure of Persian Sanat was redesigned in 2021 by an Iranian-English company. In this project, interviews and surveys were conducted with the customers of Persian Sanat and based on them, new strategies of the Persian Sanat brand were developed. Then a new visual and verbal identity was created. The new coat of arms of Persian Sanat is inspired by an Iranian plaque dating back to the Parthian era in the third century BC. This work was discovered in Susa and is now kept in the Louvre Museum in Paris .



Persian Pallets

Industrial Pallet

- The most popular pallets for loading and distributing goods in food, beverage, automotive and dairy industries

- Options : -Anti Slip Strips
-3 Optional Safety Rims
(7mm-22mm)
-reinforcement profile option

Hygienic Pallet

- Fully Closed, no cavities and ribs
- Water ingress and dust accumulation are impossible
- Outstanding bending strength
- Ideal for roller conveyors or automated high rack systems

- Options : -Reinforcement profile
-Rim
-Anti-slip strips

Petrochemical Standard

- Designed to be used especially in: Petrochemical and chemical industries
- Connected six runners facilitate: movement on the conveyor logistics operations
- Transportation



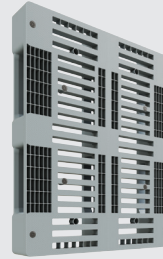
IP1

NW: 13.5 Kgs
120×100×14 cm
SL: 5000 Kgs
DL: 1250 Kgs
📦550 🚛650
■ □



IP2

NW: 14.5 Kgs
120×100×15 cm
SL: 5000 Kgs
DL: 1250 Kgs
📦392 🚛450
■ □



IP3

NW: 15.5 Kgs
120×100×15 cm
SL: 5000 Kgs
DL: 1250 Kgs
📦550 🚛600
■ □



IP4

NW: 14.5 Kgs
120×100×15.7 cm
SL: 4500 Kgs
DL: 1500 Kgs
📦473 🚛520
■ □



IP5

NW: 15.5 Kgs
120×100×15.7 cm
SL: 4500 Kgs
DL: 1500 Kgs
📦473 🚛520
■ □



HP1

NW: 18 Kgs
120×80×16 cm
SL: 5000 Kgs
DL: 1250 Kgs
📦550 🚛644
■ □



HP2

NW: 14 Kgs
120×80×13 cm
SL: 5000 Kgs
DL: 1250 Kgs
📦700 🚛780
■ □



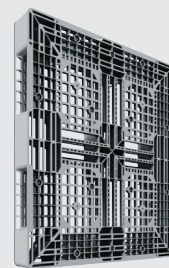
HP3

NW: 22.5 Kgs
120×100×16 cm
SL: 7500 Kgs
DL: 1500 Kgs
📦450 🚛520
■ □



HP4

NW: 16.5 Kgs
120×100×13 cm
SL: 5000 Kgs
DL: 1250 Kgs
📦550 🚛650
■ □



PS1

NW: 14.5 Kgs
130×110×15 cm
SL: 5000 Kgs
DL: 1250 Kgs
📦320 🚛374
□ ■



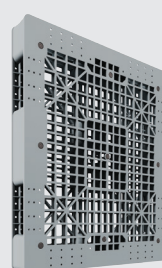
PS2

NW: 15.5 Kgs
130×110×15 cm
SL: 5000 Kgs
DL: 1250 Kgs
📦320 🚛374
□ ■



PS3

NW: 18.5 Kgs
130×110×15 cm
SL: 5000 Kgs
DL: 1375 Kgs
📦320 🚛374
□ ■



PS4

NW: 27.5 Kgs
130×110×15 cm
SL: 6000 Kgs
DL: 1800 Kgs
📦320 🚛374
□ ■

NW : Net weight
SL : Static load
DL : Dynamic load

All products net weight may vary ± 0.5 Kgs.



Persian Sanat Plastic Pallets are food grade depending on different models.



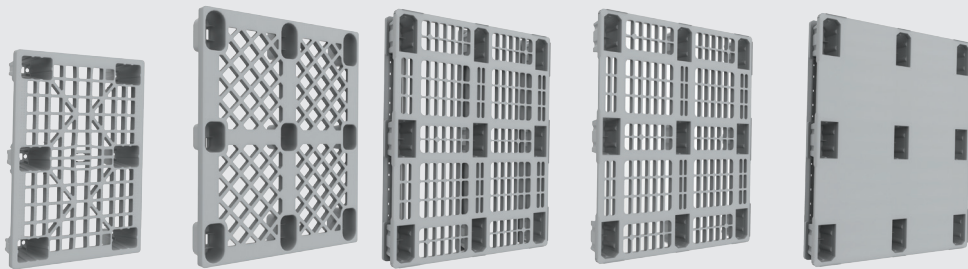
Container 40 HC



Jumbo Truck

Nest Pallet

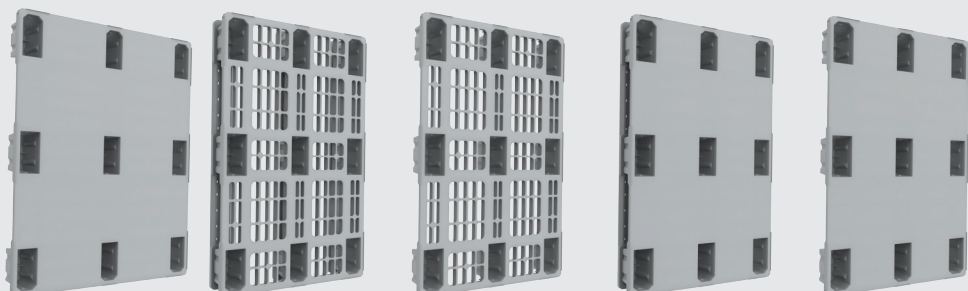
- Occupy less space
- Light weight
- Cost-effective



DP1	NP1 - 9L	NP2 - 3R	NP2 - 9L	NP3 - 3R
NW: 2.9 Kgs	NW: 7 Kgs	NW: 9.2 Kgs	NW: 7.2 Kgs	NW: 10.2 Kgs
80×60×13.5 cm	120×100×14 cm	120×100×14.5 cm	120×100×13.5 cm	120×100×14.5 cm
SL: 800 Kgs DL: 400 Kgs	SL: 1000 Kgs DL: 800 Kgs	SL: 2500 Kgs DL: 1500 Kgs	SL: 2000 Kgs DL: 1250 Kgs	SL: 2000 Kgs DL: 1500 Kgs
3550 6080	1100 1300	1260 1470	1500 1820	1260 1470
■ ■	■ ■	■ ■	■ ■	■ ■

Nest Pallet

- Occupy less space
- Light weight
- Cost-effective

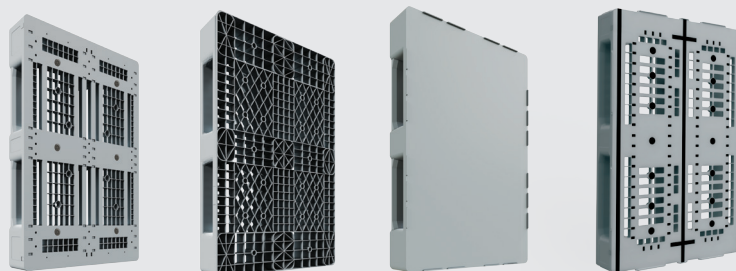


NP3 - 9L	NP4 - 3R	NP4 - 9L	NP5 - 3R	NP5 - 9L
NW: 8.2 Kgs	NW: 8 Kgs	NW: 6 Kgs	NW: 9 Kgs	NW: 7 Kgs
120×100×13.5 cm	120×80×14.5 cm	120×80×13.5 cm	120×80×14.5 cm	120×80×13.5 cm
SL: 2000 Kgs DL: 1500 Kgs	SL: 2500 Kgs DL: 1250 Kgs	SL: 2000 Kgs DL: 1000 Kgs	SL: 2500 Kgs DL: 1200 Kgs	SL: 2000 Kgs DL: 1000 Kgs
1500 1820	1410 1820	1760 2300	1410 1820	1760 2300
■ ■	■ ■	■ ■	■ ■	■ ■

Euro Standard

- Monoblock euro standard pallet
- ideal pallet for automatic conveyor systems
- its strength and durability make it suitable for high racking systems
- it is much more cost-effective than wood pallet

- Options : -Rims
-Reinforcement profiles
-ESD



ES1	ES2	ES3	ES4
NW: 12 Kgs	NW: 13.5 Kgs	NW: 14 Kgs	NW: 12.2 Kgs
120×80×15 cm	120×80×17 cm	120×80×15.5 cm	120×80×14.3 cm
SL: 5000 Kgs DL: 1000 Kgs	SL: 5000 Kgs DL: 1000 Kgs	SL: 5000 Kgs DL: 1250 Kgs	SL: 5000 Kgs DL: 1000 Kgs
550 700	470 580	550 680	550 700
■ ■	■ ■	■ ■	■ ■

Standard colors :

Light gray ■ White □ Yellow ■
Light blue ■ Black ■ Green ■
Dark blue ■ Red ■



ESD : The ESD safe pallet is comprised of conductive plastics that effectively eliminate static electricity. These pallets are used in a variety of applications to prevent against early defects or damage caused by electrical discharge.

All products net weight may vary ± 0.5 Kgs.



Persian Box

- High volume
- Safe storage of vegetables, fresh and dried fruits, nuts
- Convenient transportation of small parts or bulk goods
- Sleeve Box & Lid

- Optimal design
- Foldability
- Light weight
- Takes up 80% less space on return way.

- Options : - Capable of installing wheels
- Flap opening



BP1

NW: 45 Kgs
120×100×91.5 cm
VOLUME: 700 L
SL: 5000 Kgs
DL: 1000 Kgs

84 104



BP2

NW: 43 Kgs
120×100×91.5 cm
VOLUME: 700 L
SL: 5000 Kgs
DL: 1000 Kgs

84 104



BP3

NW: 41.5 Kgs
120×100×79 cm
VOLUME: 670 L
SL: 4500 Kgs
DL: 500 Kgs

88 104



BP4

NW: 33.5 Kgs
120×100×77 cm
VOLUME: 670 L
SL: 4500 Kgs
DL: 500 Kgs

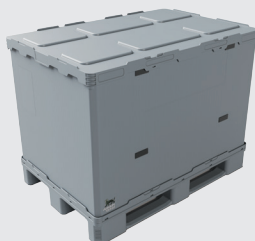
88 104



SB1

NW: 32 Kgs
120×100×102 cm
VOLUME: 900 L
SL: 500 Kgs
DL: 250 Kgs

250 320



SB2

NW: 33.5 Kgs
120×80×92 cm
VOLUME: 643 L
SL: 1000 Kgs
DL: 500 Kgs

216 297



Nestable container

popular in the food processing industry:

- . meat, fish and poultry

also suitable to be used in:

- . construction industry
- . municipalities
- . snowy road maintenance.



NC1

NW: 17 Kgs
120×78×63 cm
VOLUME: 300 L
SL: 785 Kgs
DL: 250 Kgs

450 510



NW : Net weight
SL: Static load
DL : Dynamic load

All products net weight may vary ± 0.5 Kgs.



Persian Sanat Plastic Pallets are food grade depending on different models.



Container 40 HC



Jumbo Truck

Outdoor Bins

- All parts are recyclable
- User specific-
- customizable
- suitable for parks and urban environments



Volume: 50 L
Weight: 6 Kgs
Material: HDPE



Volume: 50 L
Weight: 12.5 Kgs
Material: HDPE



Volume: 50 L
Weight: 9.8 Kgs
Material: HDPE



Swing Top Bins Step on Bins 45-65 l

- Robust design
- Smooth surfaces
- Easy handling
- suitable for hospital environments



Volume: 45 L
Weight: 1.7 Kgs
Material: PP/HDPE



Volume: 60 L
Weight: 3 Kgs
Material: HDPE



Volume: 65 L
Weight: 2.7 Kgs
Material: PP/HDPE



Standard colors :

Green	■	Orange	■
Light green	■	Blue	■
Yellow	■	Black	■

All products net weight may vary \pm 0.5 Kgs.



This European standard specifies dimensions and design requirements of mobile waste and recycling containers.

Plastic containers for waste and recycling materials - Quality assurance.

Two-wheeled Bins
100-360 l

- Remarkable stability
- Applicable to high stress
- Uniquely designed front area
- Place for ID chip nest
- suitable for waste separation at source
- Optimised , robusts construction
- Specially Cost-effective
- Resource-friendly bin concept
- suitable for waste separation at source



Volume: 100 L
Weight: 7.7 Kgs
Material: HDPE



Volume: 240 L
Weight: 13.2 Kgs
Material: HDPE



Volume: 360 L
Weight: 22 Kgs
Material: HDPE



Four-wheeled Bins
660 - 1100 l

- Suitable for industrial and municipal utilizations
- Compatible with all lifting devices



Volume: 660 L
Weight: 38 Kgs
Material: HDPE



Volume: 770 L
Weight: 46 Kgs
Material: HDPE



Volume: 1100L
Weight: 51 Kgs
Material: HDPE



Regarding the bin type, various additional options and fittings are available to individually customize the container to fit your requirements. All products net weight may vary + 0.5 Kgs.

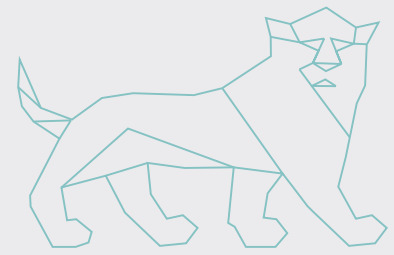


It signifies that products sold in the EEA (European Economic Area) have been assessed to meet high safety, health and environmental protection requirements.

Persian Sanat slogan is "Power of Quality"

Persian Sanat concentrates on quality and stability. This starts with the general orientation of manufacturing long lasting and recyclable products, the use of best virgin High-Density Polyethylene (HDPE) that has been examined by high quality standards.

Persian Sanat products (e.g., plastic pallets, plastic pallet boxes, plastic bins and wheeled waste containers) are consequently all made from high quality virgin HDPE. This material offers excessively impact resistance, robustness and durability . As compared to other plastics, HDPE can be used without cracks and damages, even at low temperatures. it's noticeably immune to acids and chemicals.



Colors and Labelling

Remarkable color management

we provide a massive range of standard and unique colors. All Persian Sanat products can also be customized with printing or embossing logos.

Labelling options are as follow:

- Embossing Logo
- Printing Logo



Printed Logo



Embossed Logo

Customers Satisfactory Assurance

with facilities in our testing department

when planning and analyzing product, Persian Sanat makes use of its inner equipment: nearly all of the important standard facilities are available in our own testing department and labs. throughout the items analysis, product approval and initial sample analysis, our proficient team ensures that all items are of the desired high-quality. For certain experiments or product certifications, we are in touch with numerous external testing institutes.

In order to ensure the pallets and waste containers quality , following tests are done in Persian Sanat laboratory:



Corner drop test



Robotic production line

Pallets for materials handling – Flat pallets

- Bending tests
- Forklifting tests
- Compression tests for blocks or stringers
- Stacking test
- Bottom deck bending tests
- Static shear test
- Corner drop test
- Shear impact tests
- Top deck edge impact test
- Block impact test
- Static coefficient of friction test
- Slip angle test

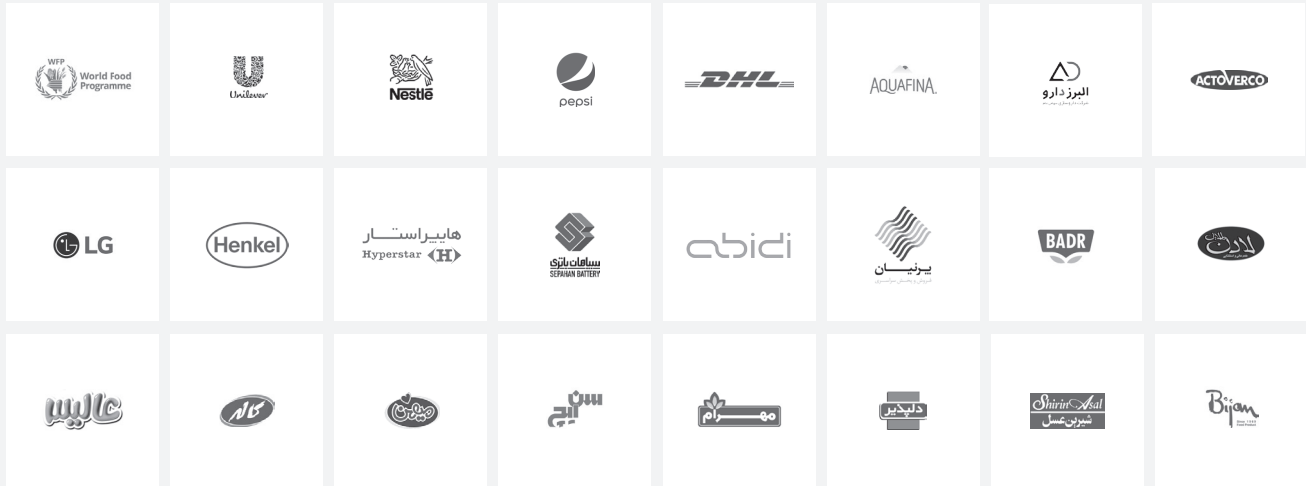
Mobile waste and recycling containers

- Impact tests by ball drop
- Impacts on an inclined plane
- Kerb travel (run)
- Kerb travel (falls)
- Stability test
- Pulling tests
- Wheels testing
- Brake tests
- Lifting-tilting tests
- Internal stress-cracking tests (for thermoplastics only)



Bending test

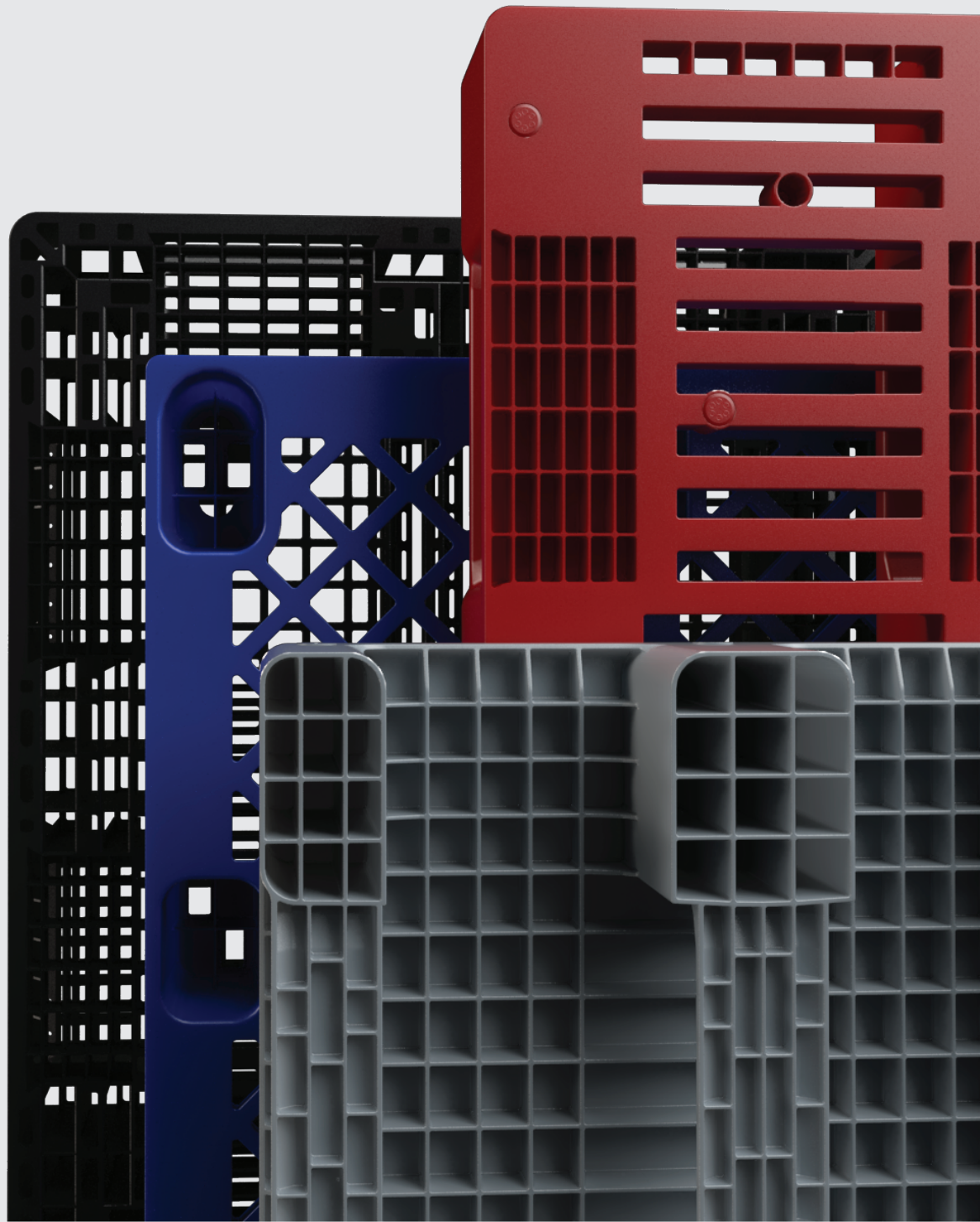
PERSIAN SANAT CUSTOMERS



OUR INTERNATIONAL EXPORTS



- Armenia
- Australia
- Azerbaijan
- Belarus
- Belgium
- Bulgaria
- China
- Georgia
- Germany
- Ghana
- Greece
- Hungary
- India
- Iraq
- Italy
- Kenya
- Kuwait
- Netherlands
- Oman
- Pakistan
- Poland
- Qatar
- Romania
- Russia
- South Africa
- Spain
- Tanzania
- Turkey
- Ukraine
- United Arab Emirates
- United Kingdom



**PERSIAN
SANAT**

POWER OF QUALITY



Contact

Factory

No.245, Mahestan St, 9th Gloestan St,
Baharestan Industrial Town, Karaj,
Alborz, Iran

+98 26 3476 2080 - 88
factory@persiansanat.com

Central Office

+98 21 4456 5300 - 8
office@persiansanat.com

Sales Department

+98 26 3476 2086
sale1@persiansanat.com