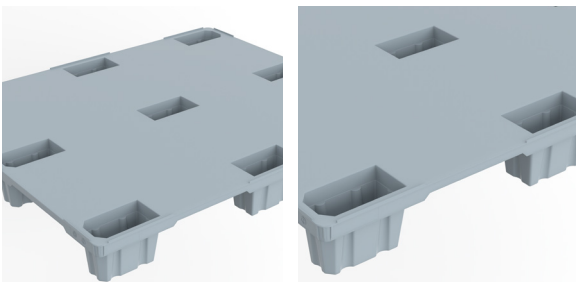
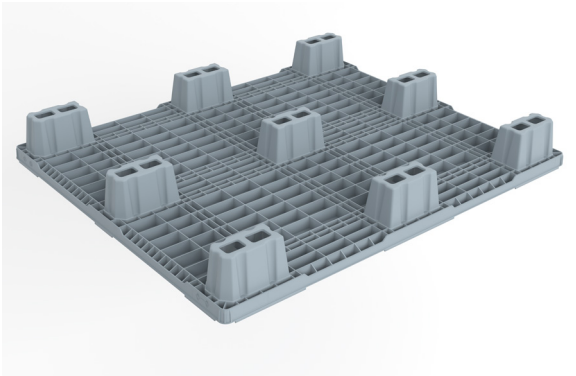
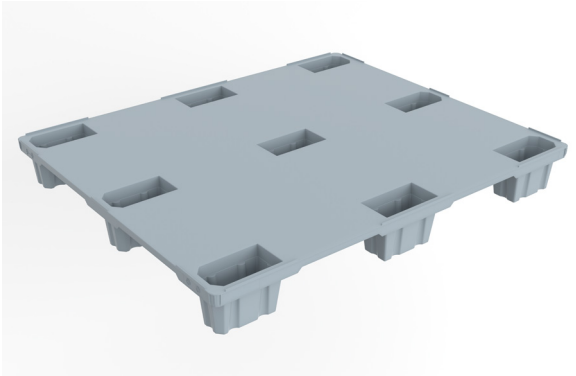


PERSIAN SANAT

NP 3-9L

A lightweight pallet that due to being nestable occupies little space when it is not loaded and due to its cost-effectiveness, it is used for light weight goods export. Another feature of this type of pallet is its easy manual handling by production line personnel when it is not loaded, another remarkable feature of this type of pallet is that although this is categorized in lightweight pallets but it is capable of bearing bulky lightweight loads. This type of pallet can also be provided with three runners.



- . Nestable - reduces freight costs
- . Easy and safe to handle
- . Environment friendly

- . Maintenance free
- . Hygienic and clean
- . Safety rims



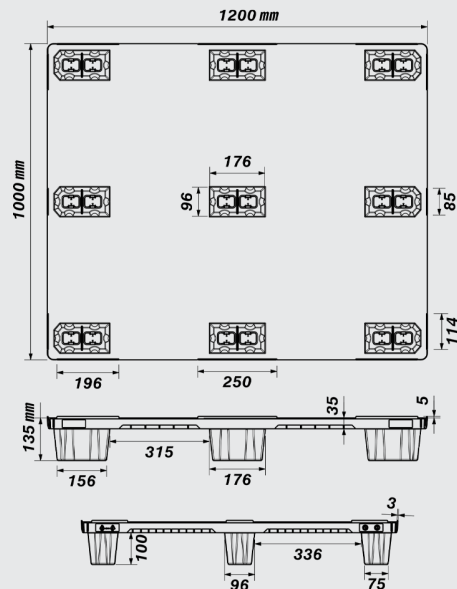
PERSIAN SANAT

Art No.
PS-1210-NP3-9L
Previous Name
LNP1210/9L

Net weight (kg)	8.2 ± 0.5	
Bottom type	9 Legs	
Dimension (mm)	1200×1000×135	
Temperature stability (°c)	-20 To +40	
Static load (kg)	2000	
Dynamic load (kg)	1500	
Racking load (kg)	-	
Reinforcement profiles	-	
Loading quantities (pcs/approx.)	1500	1820
Surface type	Closed	
Safety rims (mm)	5	
Material	HDPE / PP	
Pallet color	Other colors on request	
Logo option	Print & Embossment	

the load capacities are based on an evenly distributed loads and it can vary according to the type of load.

Container 40 HC
 Jumbo Truck



*As bottom type is Snap-On three runners, the approximate loading quantities are with unassembled runners. All dimensions may vary ± 5mm due to production process and raw materials characteristics.



POWER OF QUALITY