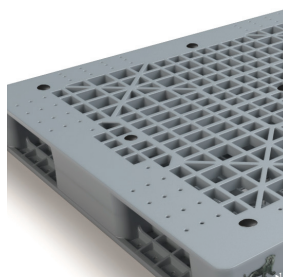
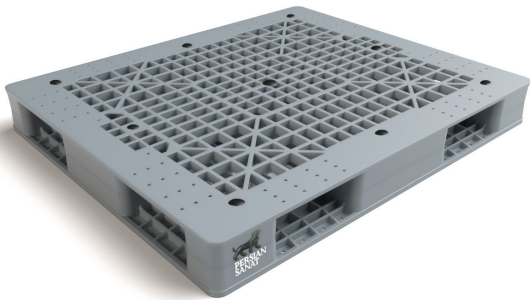
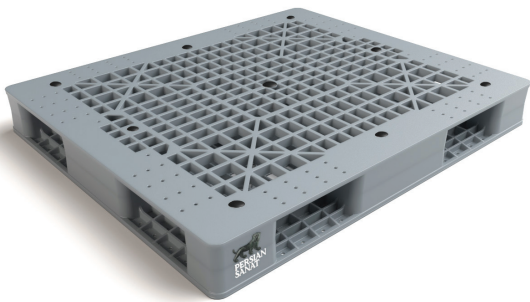


# PERSIAN SANAT

## PS 4

This type of reversible and high-weight pallet is produced in two pieces and welded together in order to hold heavy weights. Strong and lasting pallet which is suitable to be used in intralogistics and multi-use processes.



Anti-slip plugs

Reversible pallet



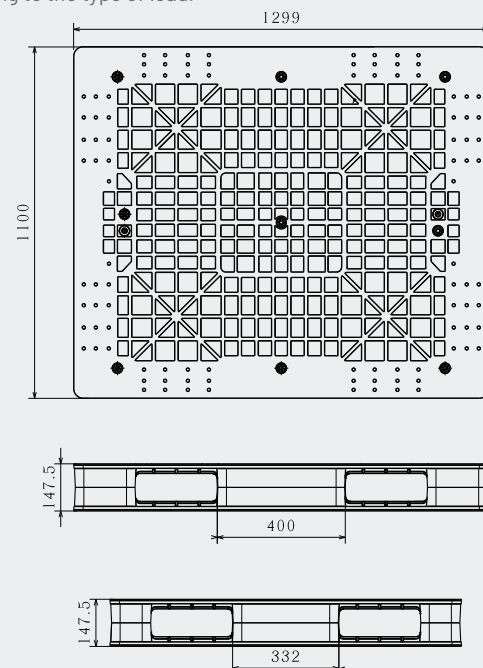
# PERSIAN SANAT

Art No.  
**PS-1311-PS4**  
Previous Name  
**IPH1311/6R**

Net weight (kg)	27.5 ± 0.5
Bottom type	Reversible
Dimension (mm)	1300×1100×150
Temperature stability (°c)	-20 To +40
Static load (kg)	6000
Dynamic load (kg)	1800
Racking load (kg)	1200
Reinforcement profiles	-
Loading quantities (pcs/approx.)	320  374
Surface type	Open
Safety rims (mm)	-
Material	HDPE
Pallet color	Other colors on request
Logo option	Print & Embossment

the load capacities are based on an evenly distributed loads and it can vary according to the type of load.

Container 40 HC  
 Jumbo Truck



All dimensions may vary ± 5mm due to production process and raw materials characteristics.



POWER OF QUALITY